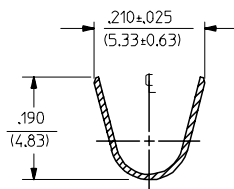
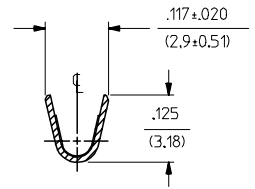


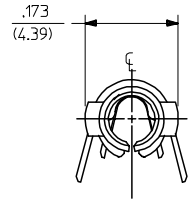
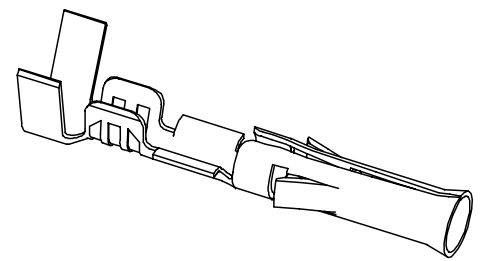
PART NO.	ENG. NO.
02-09-1104	1189-A(P901)L
02-09-1102	1189-A(P901)
02-09-5111	1189-A(P591)L
02-09-5102	1189-A(P591)
02-09-5106	1189-A(P550)L
02-09-5100	1189-A(P550)



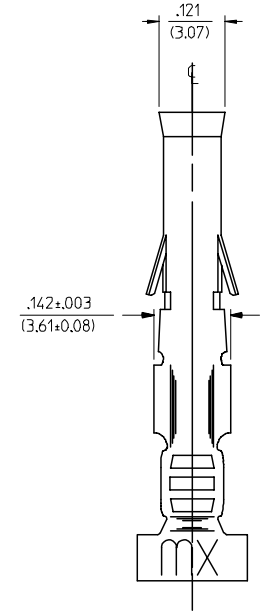
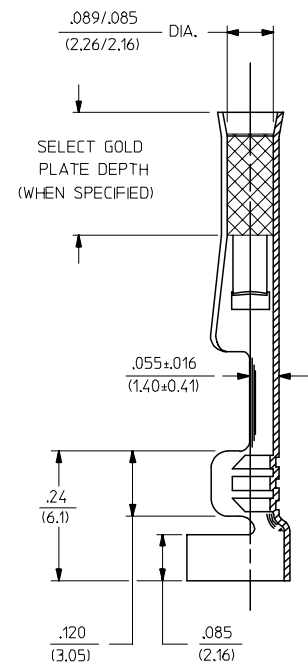
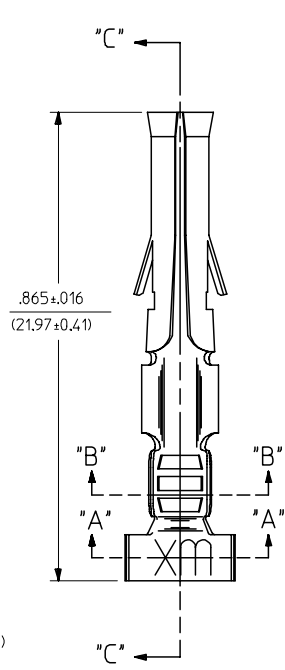
SECT. "A-A"



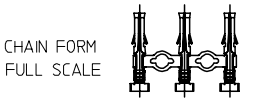
SECT. "B-B"



**LEGEND**  
 1189-A(\*\*\*\*)\*  
 \*FORM  
 BLANK=CHAIN  
 L=LOOSE  
 P=PREPLATE  
 BLANK=POSTPLATE  
 FINISH CODE



SECT. "C-C"



- NOTES:
- MATERIAL: CARTRIDGE BRASS, ALLOY #C26000, .010/(0.25) THICK
  - FINISH CODES:
    - 901 HOT TIN DIP .000020/(0.00051) MIN.
    - 591 SELECT GOLD PLATE .000050/(0.00127) MIN. IN CONTACT AREA, OVER .000050/(0.00127) MIN. NICKEL OVERALL WITH .000010/(0.00025) MAX. GOLD FLASH OVERALL.
    - 550 SELECT GOLD PLATE .000015/(0.00038) MIN. IN CONTACT AREA, OVER .000030/(0.00076) MIN. NICKEL OVERALL WITH .000010/(0.00025) MAX. GOLD FLASH OVERALL.
  - \*THE PRIMARY SHIPPING CARTON WILL BE LABELED, "COMPLIANT TO RoHS DIRECTIVE 2002/95/EC AND ELV ANNEX OF DIRECTIVE 2000/53/EC", AND CARTONS WITHOUT THIS LABEL MAY CONTAIN PRODUCT WITH TIN-LEAD.
  - THIS PART CONFORMS TO PROD. SPEC. 02-09.
  - PACKAGING INFORMATION: NOT AVAILABLE
  - TERMINAL FOR USE WITH .093/(2.36) SERIES HOUSINGS AND WILL ACCEPT 14 THRU 20 AWG WIRE.
  - INSERTION FORCE: 3.5 LBS. MAX. WHEN TERMINAL IS INSERTED INTO AN .093 SERIES HOUSING.
  - RETENTION: 20 LBS. MIN. FROM HOUSING.

ADDED PARTS EC NO: UCP2006-1061 DRAWN: PETERSON 2005/11/18 CHKD: FSI TH 2005/11/29 APPR: FSI TH 2005/12/02 REV: C1	QUALITY SYMBOLS 	GENERAL TOLERANCES (UNLESS SPECIFIED)		DIMENSION STYLE IN/MM		SCALE 6:1	DESIGN UNITS INCH	THIRD ANGLE PROJECTION			
		4 PLACES ± --- ± ---	mm INCH	DRAWN BY GEP	DATE 1987/10/26	TITLE CRIMP TERMINAL, FEMALE, .093/(2.36) DIA. 14-20 AWG					
		3 PLACES ± --- ± .010		CHECKED BY RW	DATE 1987/10/26	MATERIAL NO. RAS					
		2 PLACES ± 0.25 ± .014 1 PLACE ± 0.35 ± --- ANGULAR ±1/2°		APPROVED BY RAS	DATE 1987/10/26	DOCUMENT NO. SD-1189-*					
DRAFT WHERE APPLICABLE MUST REMAIN WITHIN DIMENSIONS		SEE CHART		SHEET NO. 1 OF 1		THIS DRAWING CONTAINS INFORMATION THAT IS PROPRIETARY TO MOLEX INCORPORATED AND SHOULD NOT BE USED WITHOUT WRITTEN PERMISSION					